



Make-it Monday

Recycled Dinosaur Planter

Create a cool planter with a plastic bottle. To make your own homemade dinosaur planter, you will need:

- Empty plastic bottle (any kind)
- Masking tape
- Sandpaper
- Sharpie or chalk marker
- Acrylic paint or spray paint for plastic
- Paint brush
- Utility knife or sharp scissors
- Hot glue or glue stick
- Decorations (buttons, ribbon, googly eyes)
- Small rocks (for drainage)
- Plant soil
- A plant





Make-It Monday

Recycled Dinosaur Planter

Let's Get Started!

Draw on your Dinosaur Shape

Use the masking tape to tape around the bottle. This will give you a straight line to cut.

Dinosaur: Use the sharpie or chalk marker to draw out the neck of the dinosaur above the masking tape line. Tip: chalk marker can wipe off easily later. You can paint over the sharpie as well.

You can make whatever dinosaur you would like. This design is the easier of them to begin with.

Cutting

Pierce a hole in the bottle with a utility knife. Tip: keep the blade retracted, only exposing the tip for more control. If there is an older person around that can help you with this part, ask them nicely!

With scissors roughly cut out your shapes.

After the top of the bottle is removed go back around and clean up the edges.

Sanding and Painting

Remember to check over your bottle for sharp edges. Use your sandpaper to smooth the edges.

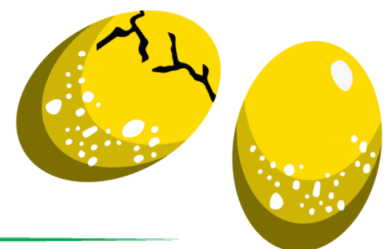
Lightly sand the outside of the bottle to roughen the surface. This helps the paint to stick. Wipe clean (make sure bottle is clean and dry).

Paint the bottle with chosen shade of acrylic paint, this will take several coats. Tip: use a hair dryer to speed drying between coats. Spray paint made for plastic can be used if you already have a can at home.

Decorate!!

Use your glue gun on a lower setting or use regular glue. (Note: regular glue might take a little more drying time.)

- Add googly eyes or draw them on.
- Use buttons for spots or paint those on.
- Put ribbon for stripes or paint those too.





Make-It Monday

Recycled Dinosaur Planter

Let's Plant!

Adding your plant:

Once your paint and decorations are dry and you have your plant of choice.

Add the rocks in one layer on the very bottom.

Then add in soil to the top of the rim.

Use a small shovel, spoon or just your hands to make a hole in the soil.

Place your plant in that hole and push the soil from the side over the plant roots.

Pack down the soil so that your plant stays upright. Note: if you need to add or take away soil, do so.

Give it a little water, find the perfect spot for your planter, and enjoy your creation!

A few other things you can store in your creation:

- Pencils
- Hair ties
- Bobby pins
- Candy
- Spare coins
- Friendship bracelets
- Special rock collection
- Anything that is important to you!

Thank you to our camp staff member Ivy for this awesome idea and adaptation.

