

Seniors

Grades 9–10*

girl scouts
of western washington



Overnight Summer Camp Guide

2025

*Grade as of Fall 2025

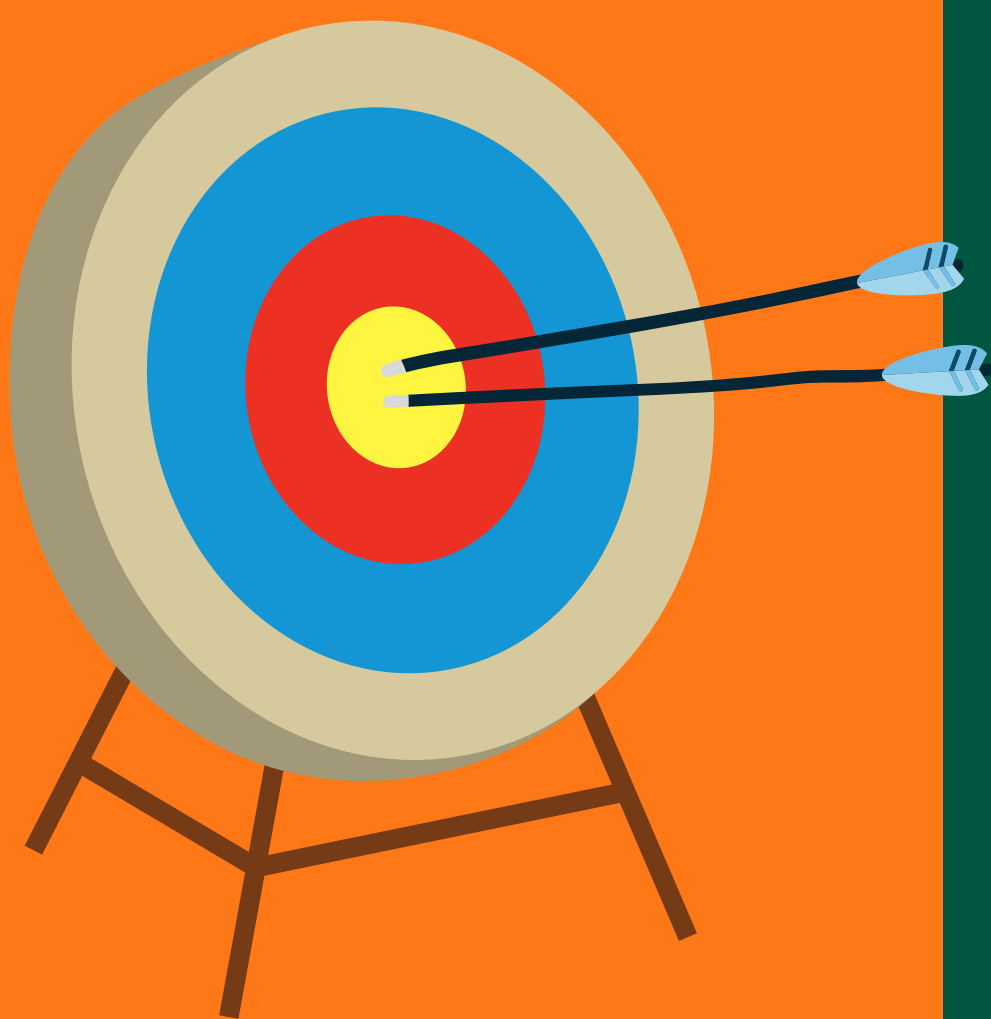
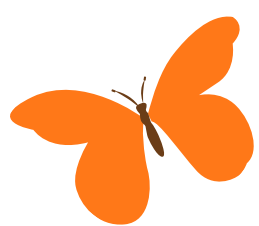




Table of Contents

In This Guide

More About Girl Scout Camp:





How to Use This Guide

This is an interactive pdf. Click, tap, and/or swipe to explore. You can view this PDF on your phone, tablet, laptop, or desktop.

Ways to Interact



Go to next page

Button

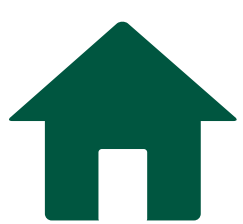
Navigate within camp guide



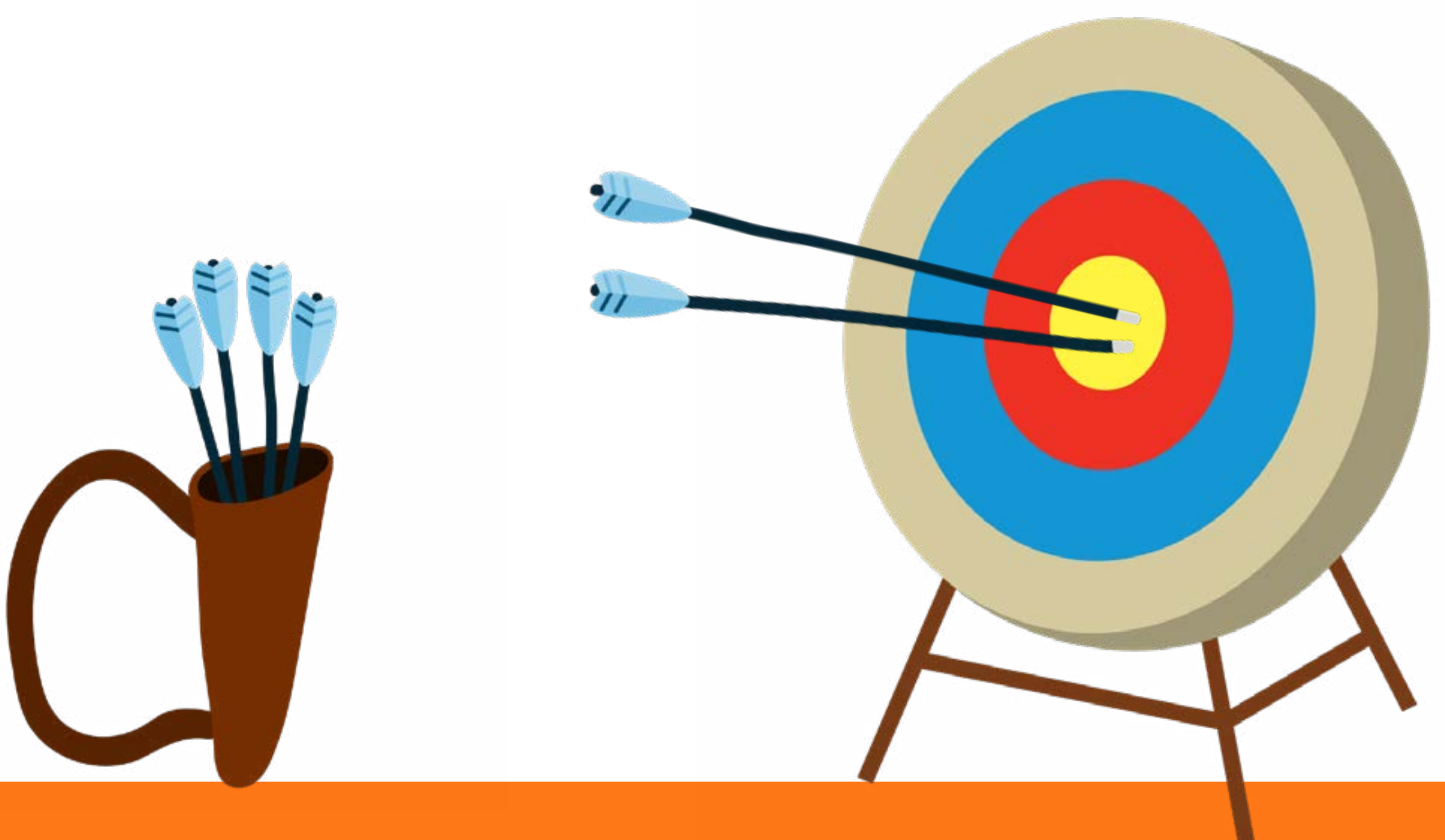
Go to previous page

Button

Navigate outside of camp guide

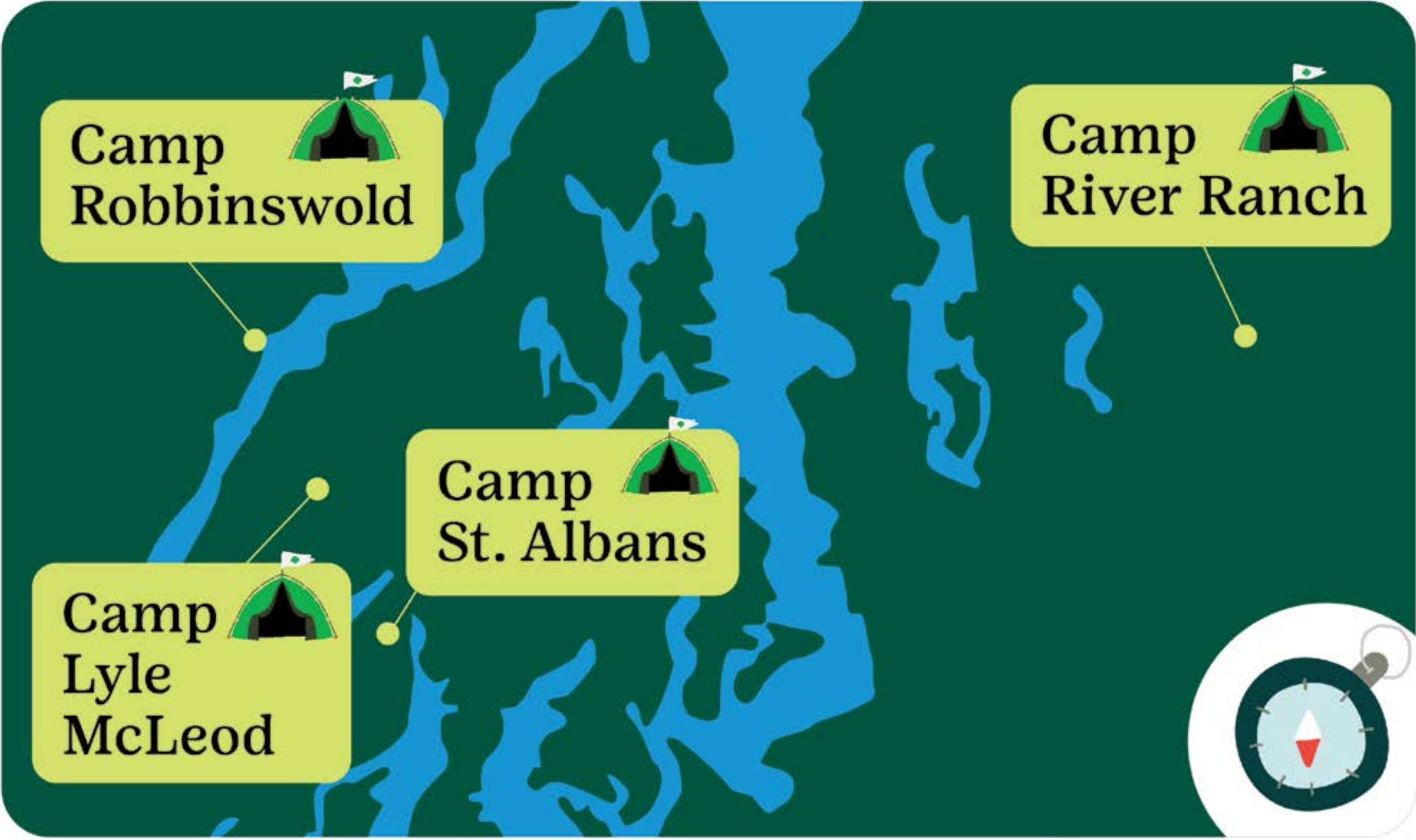


Return to table of contents





Choose Your Summer Camp



Camp River Ranch

South Entrance
33318 NE 24th St.
Carnation, WA 98014

Open House: Sunday, May 18 | 2:00–5:00 PM



Camp St. Albans

251 E Lake Devereaux Rd.
Allyn, WA 98524

Open House: Sunday, May 4 | 2:00–5:00 PM



Camp Robbinswold

39580 N Highway 101
Lilliwaup, WA 98555

Open House: Sunday, April 27 | 2:00–5:00 PM



Camp Lyle McLeod

800 NE Twin Lakes rd.
Tahuya, WA 98528





Camp Activities

All of our camp programs offer campers the chance to participate in these classic camp activities. Additionally, some of our programs are tailored to a specific type of activity or focus, which will be called out in the program description.



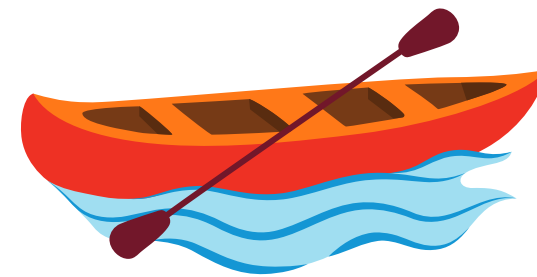
Archery



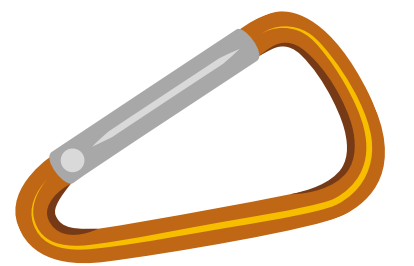
Art



Campfire



Canoeing



Climbing



Hiking



Kayaking



Paddleboarding



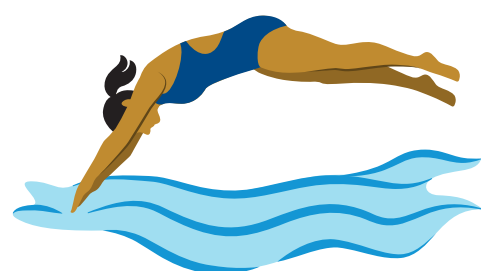
Ropes Course



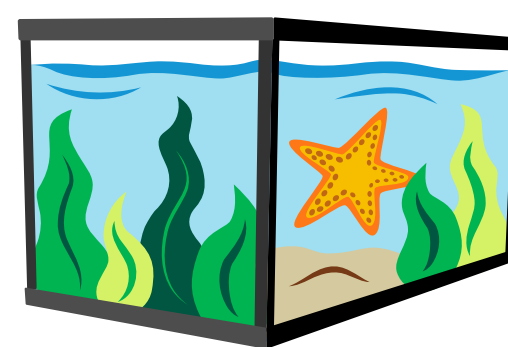
Sailing



Slingshots



Swimming



Touch Tank



Viking Boats



Cost to Attend Camp

Camp S'More at Camp River Ranch



Prices vary based on the unit selected, length of your stay, number of activities you choose, and size of your group. Our reservation team can work with you to “rightsize” your campout for most budgets.

Overnight Camp at Camp St. Albans and Camp Robbinswold



The true cost of attending one week of overnight camp is \$2,100. Because we are committed to keeping camp accessible, Girl Scouts of Western Washington subsidizes 55% of the cost to run all our staff-led overnight camp programs and charges Girl Scout members a significantly discounted rate to register. In this guide, and in CampMinder when you register, you'll see the subsidized member prices listed. When you register in CampMinder, you will also see an option to pay the full price if you are able and willing to cover the true cost of your camper's program.

Overnight Community Camp at Camp Lyle McLeod



Prices vary by camp. Please visit each camp's webpage for more information.



Camp River Ranch

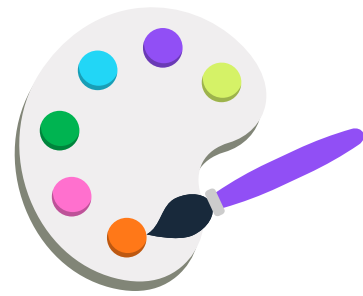


Located in the foothills of the Cascade Mountains, Camp River Ranch spreads across 486 diverse acres with miles of trails to explore. Lodging at Camp River Ranch includes rustic cabins and covered wagons with nearby flush toilets and showers. We also have limited indoor units with full kitchens and indoor bathrooms.

Camp Activities



Archery



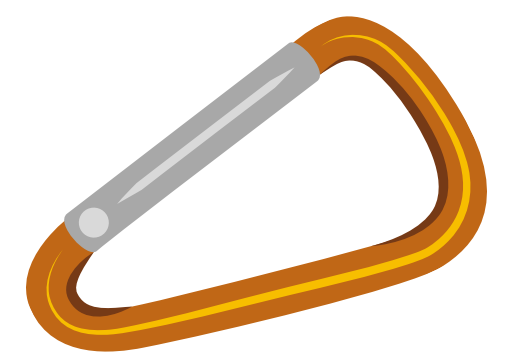
Art



Campfire



Canoeing



Climbing



Hiking



Kayaking



Ropes Course



Slingshots



Swimming



Create Your Own Camp Adventure at Camp S'More

7/4–9/1

Grade*	Program Name	Pricing
K–12, Adults	Camp S'More	Varies

Camp S'More

Camp S'More is a unique way to experience summer camp magic! Campers will be able to build their own camp adventure and experience that fits them, with options to add classic camp activities like canoeing, archery, swimming, and more to their property reservation. Groups must provide food and adult supervision, along with following all Girl Scout safety rules, and the rest is up to campers to decide. The length of your stay and number of activities will vary by group depending on what campers select. Day trips to camp with program reservations are also an option. With activities as low as \$10 per person and cabins starting at \$30 per night, we hope you'll come join us for S'More camp fun!

Please note: Campers can register for Camp S'More by making a property reservation with program add-ons through our Rent Our Camps landing page.



*Grade as of Fall 2025



Camp St. Albans

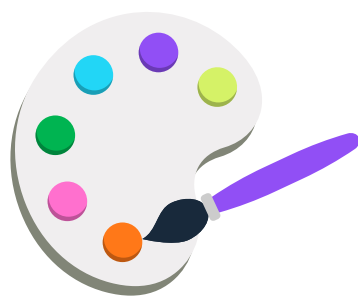


Camp St. Albans covers more than 400 wooded acres with over five miles of trails, all surrounding beautiful Lake Devereaux. The property is known for its unique Viking boats and the gnomes that inhabit the camp. Lodging options include heated cabins, open-air cabins, and platform tents.

Camp Activities



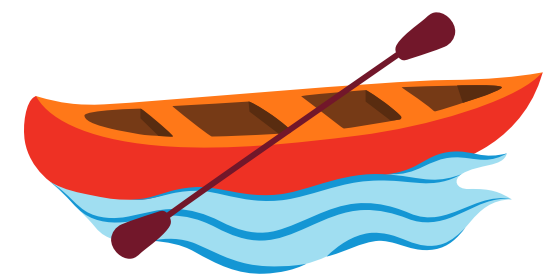
Archery



Art



Campfire



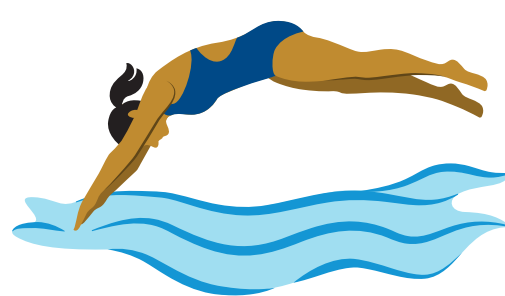
Canoeing



Hiking



Paddleboarding



Swimming



Viking Boats



Choose Your Camp Session



Programs for Girl Scouts in grades 9–10 will be offered during the following weeks.

Half weeks: Camper drop off is Sunday afternoon and pick up is Wednesday afternoon.
Full weeks: Camper drop off is Sunday afternoon and pick up is Friday afternoon.

S	M	T	W	T	F	S
June 29	30	July 1	2	3	4	5
Session 1: Half week						
6	7	8	9	10	11	12
Session 2: Full Week						
13	14	15	16	17	18	19
Session 3: Full Week						
20	21	22	23	24	25	26
Session 4: Full Week						
27	28	29	30	31	Aug 1	2
Session 5: Full Week						
3	4	5	6	7	8	9
Session 6: Full Week						
10	11	12	13	14	15	16
Session 7: Full Week						



Session 1

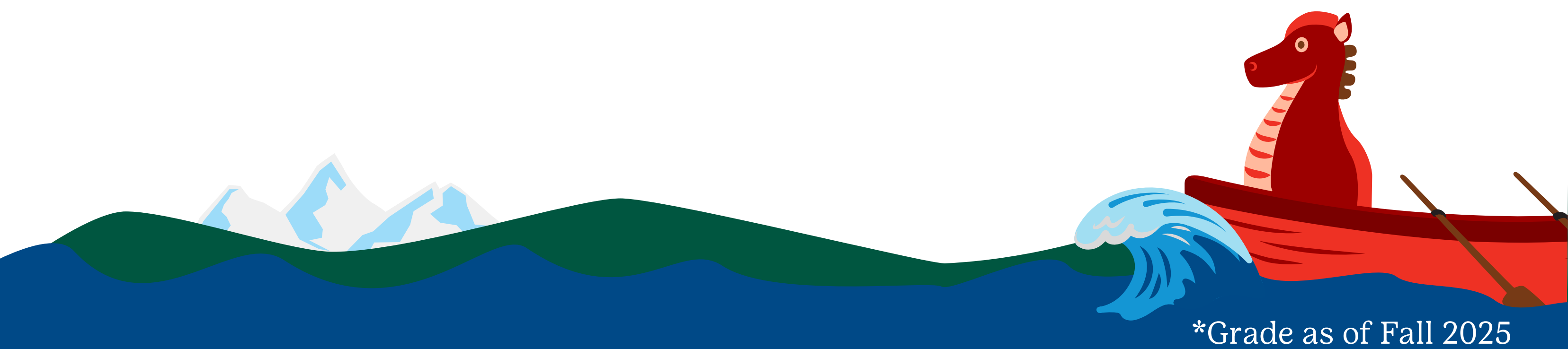
6/29–7/2 - *Half Week*



Grade*	Program Name	Pricing
9–10	Clash of the Cabins	\$640

Clash of the Cabins

Will your unit go home with the Golden Gnome? This is a classic Camp St. Albans experience with a twist! Compete in daily challenges and battle it out during all camp activities—chanting loud throughout the week to earn the most team spirit awards!



*Grade as of Fall 2025



Session 2

7/6–7/11 - *Full Week*



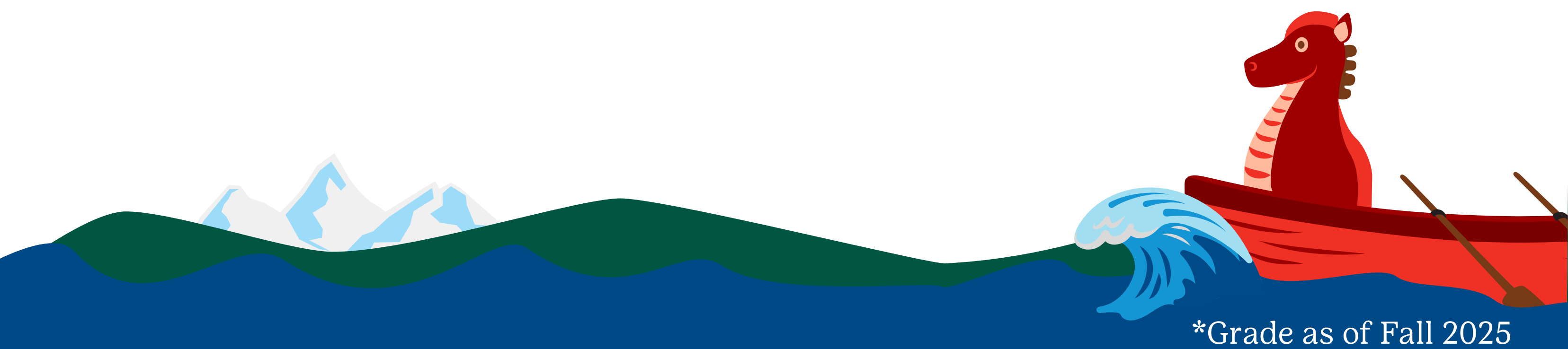
Grade*	Program Name	Pricing
9–10	Troll-cation	\$1,150
10	Counselor-in-Training I (13-Day)	\$1,980

Troll-cation

It’s time to go troll hunting! Driftwood trolls have popped up all over the PNW! So create a playlist, pack the camp van, and head out on a troll-rific road trip. Campers will select the trolls and areas to visit as they work toward the Ultimate Recreation Challenge or Traveler badge.

Counselor-in-Training (CIT) I (13-Day)

In this first level of the leadership program, CITs learn about the skills needed to become a camp counselor. They develop their personal leadership style, explore the basics of planning and leading programs, and discover group management techniques. Campers stay at camp for Sessions 2 and 3.



*Grade as of Fall 2025



Session 3

7/13–7/18 - *Full Week*



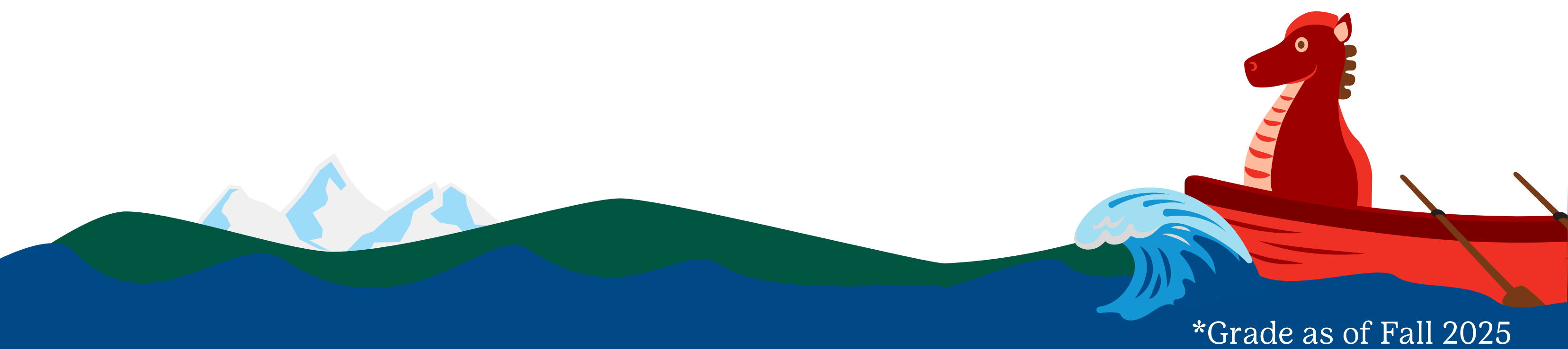
Grade*	Program Name	Pricing
9–10	Haunted Happenings	\$1,150
10	Counselor-in-Training I (13-Day)	\$1,980

Haunted Happenings

Dive into ghost hunting with real paranormal investigators! Learn about the equipment and the best way to conduct an investigation—then hit the road and visit some famous haunted locations. Before the week ends, you’ll conduct your own paranormal investigation!

Counselor-in-Training (CIT) I (13-Day)

In this first level of the leadership program, CITs learn about the skills needed to become a camp counselor. They develop their personal leadership style, explore the basics of planning and leading programs, and discover group management techniques. Campers stay at camp for Sessions 2 and 3.



*Grade as of Fall 2025



Session 4

7/2–7/25 - *Full Week*



Grade*	Program Name	Pricing
9–10	Animal Tails	\$1,150

Animal Tails

Join us for some fur-filled fun during this entire week dedicated to ANIMALS! Discover some amazing creatures in our wild kingdom and take a field trip off camp to meet some animal friends!



*Grade as of Fall 2025



Session 5

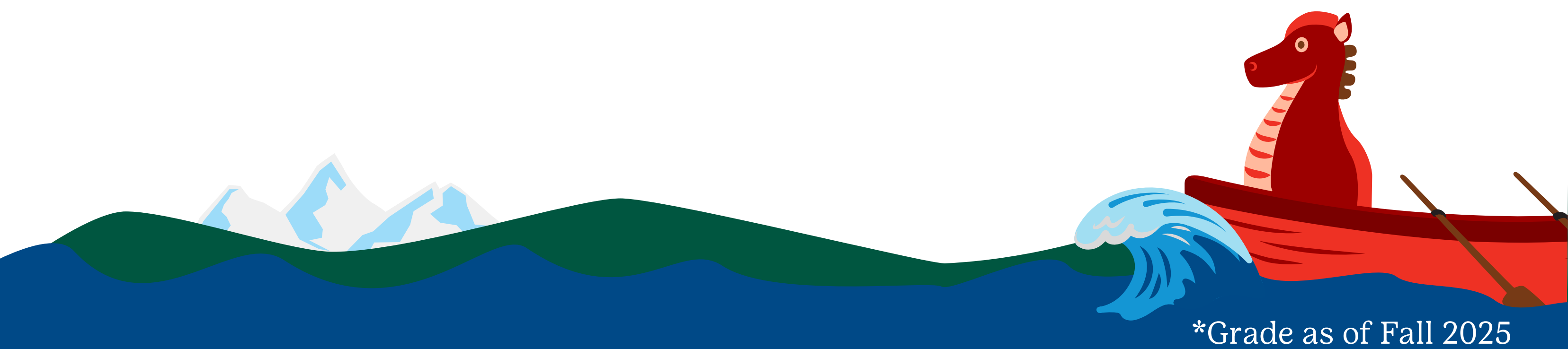
7/27–8/1 - *Full Week*



Grade*	Program Name	Pricing
9–10	Endless Summer	\$1,150

Endless Summer

Squeeze all the adventure and memories you can into this week at your home in the woods. Meet virtually with camp staff before your session starts to plan your dream schedule. You and your group will decide together how to make the most of the week!



*Grade as of Fall 2025



Session 6

8/3–8/8 - *Full Week*



Grade*	Program Name	Pricing
9–10	PRIDE – Classic Camp	\$950
9–10	PRIDE – Into the Arts	\$950

PRIDE – Classic Camp

Experience Girl Scout camp magic with your community! This session is specifically designed for Girl Scouts who are part of the LGBTQIA+ community.

PRIDE – Into the Arts

Delve into the arts, exploring your creative side and creating unique projects to bring home. This session is specifically designed for Girl Scouts who are part of the LGBTQIA+ community.



*Grade as of Fall 2025



Session 7

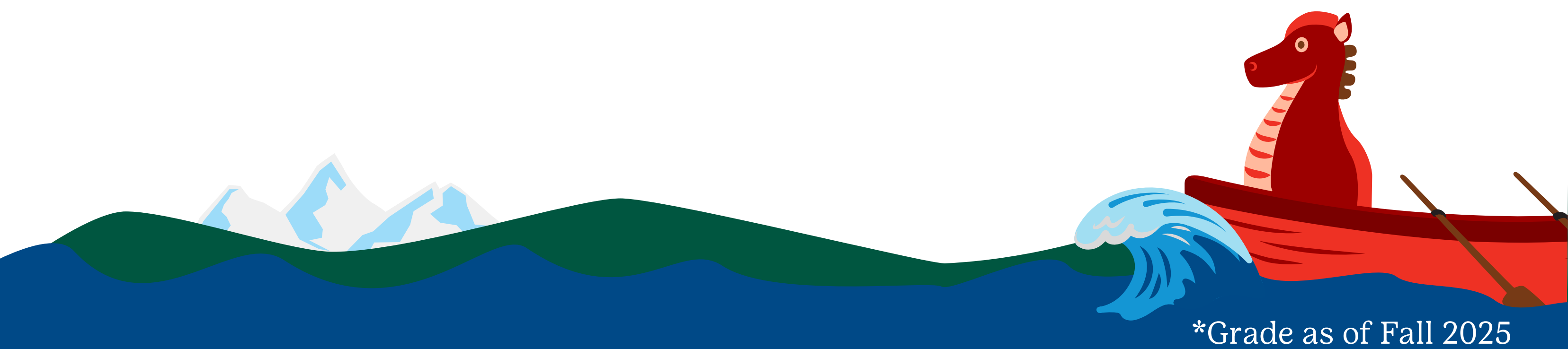
8/10–8/15 - *Full Week*



Grade*	Program Name	Pricing
9–10	Mission: Discovery	\$950

Mission: Discovery

Explore the sky and galaxies beyond during this fun-filled space camp! Build and launch your own rocket, learn about and fly a drone, stay up late to get a closer look at the moon, planets, and stars, and more! This camp is being made possible by Boeing.



*Grade as of Fall 2025

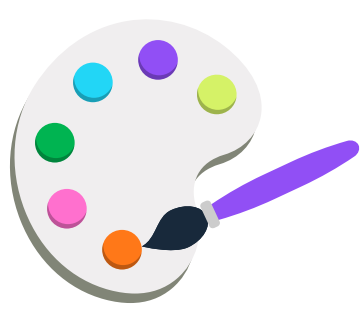


Camp Robbinswold



Located on Hood Canal, Camp Robbinswold covers 570 acres, including one mile of saltwater beachfront, six miles of hiking trails, and a freshwater lake. Campers stay in open-air cabins or canvas tents with up to five other campers. Plus, campers in grades four and above can go on an overnight camping trip on our upper property or along Hood Canal.

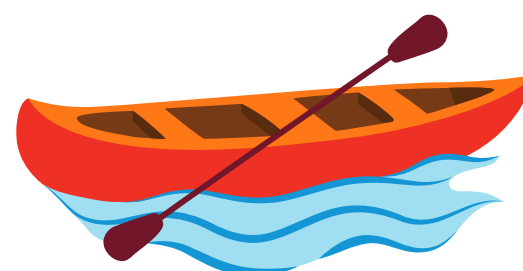
Camp Activities



Art



Campfire



Canoeing



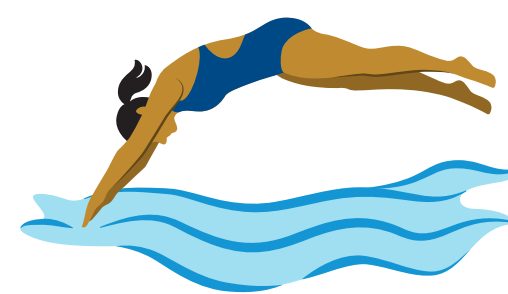
Hiking



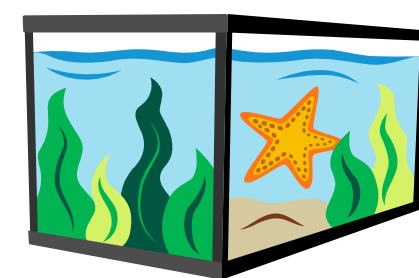
Sailing



Sea Kayaking



Swimming



Touch Tank



Choose Your Camp Session

Programs for Girl Scouts in grades 9–10 will be offered during the following weeks.

Note: camper drop off is Sunday afternoon and pick up is Friday evening.

S	M	T	W	T	F	S
June 29	30	July 1	2	3	4	5
Session 1: Half Week						
6	7	8	9	10	11	12
Session 2: Full Week						
13	14	15	16	17	18	19
Session 3: Full Week						
20	21	22	23	24	25	26
Session 4: Full Week						
27	28	29	30	31	Aug 1	2
Session 5: Full Week						
3	4	5	6	7	8	9
Session 6: Full Week						
10	11	12	13	14	15	16
Session 7: Full Week						



Session 1

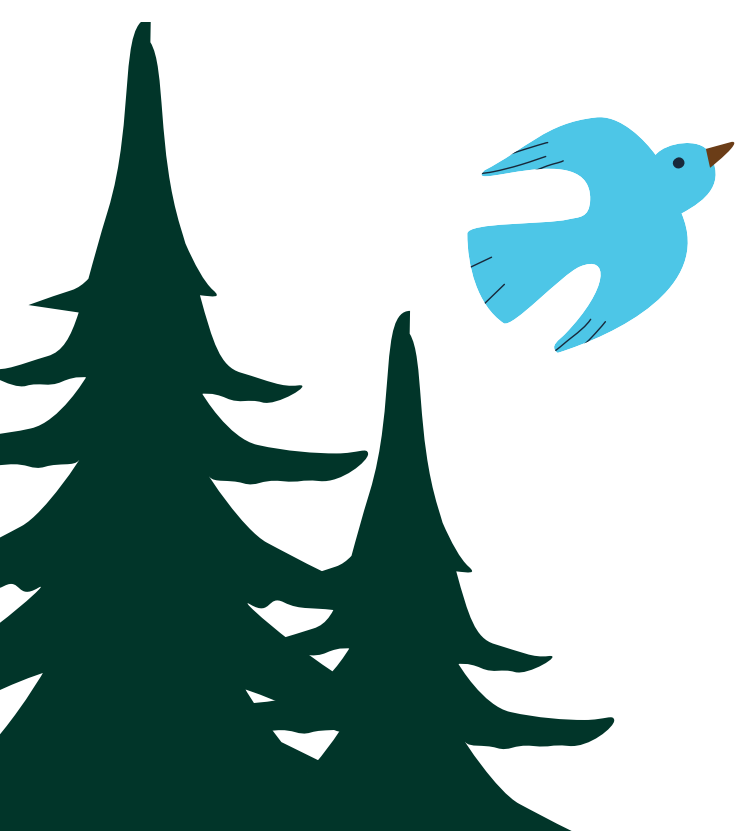
6/29–7/2 - *Half Week*



Grade*	Program Name	Pricing
9–10	Orca Regata	\$640

Orca Regata

Will your team go home with the Golden Orca? This is a classic Camp Robbinswold experience with a twist! Compete in daily challenges and battle it out during all camp activities—chanting loud throughout the week to earn the most team spirit awards!



*Grade as of Fall 2025



Session 2

7/6–7/11 - *Full Week*



Grade*	Program Name	Pricing
9–10	Beach Bum	\$950
9–10	Advanced Marine Biology	\$1,150
10	Counselor-in-Training I (13-Day)	\$1,980

Beach Bum

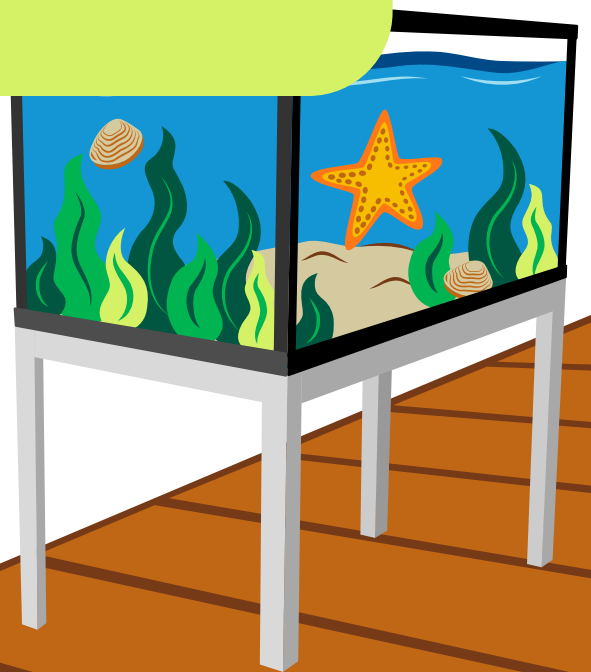
Relax at the waterfront, paddleboard, kayak, and swim—campers will participate in all things water-related! This program also includes a trip to Port Townsend.

Advanced Marine Biology

Dive deeper into the natural wonders of Hood Canal, with exploration at Camp Robbinswold and local museums. You'll also participate in a bioluminescence kayak tour and learn about the plankton that create this phenomenon. Participants will work toward their Eco Explorer or Water badge.

Counselor-in-Training (CIT) I (13-Day)

In this first level of the leadership program, CITs learn about the skills needed to become a camp counselor. They develop their personal leadership style, explore the basics of planning and leading programs, and discover group management techniques. Campers stay at camp for Sessions 2 and 3.



*Grade as of Fall 2025



Session 3

7/13–7/18 - *Full Week*



Grade*	Program Name	Pricing
9–10	Beginning Sailing	\$950
9–10	Intermediate Backpacking (13-Day)	\$1,980
10	Counselor-in-Training I (13-Day)	\$1,980

Beginning Sailing

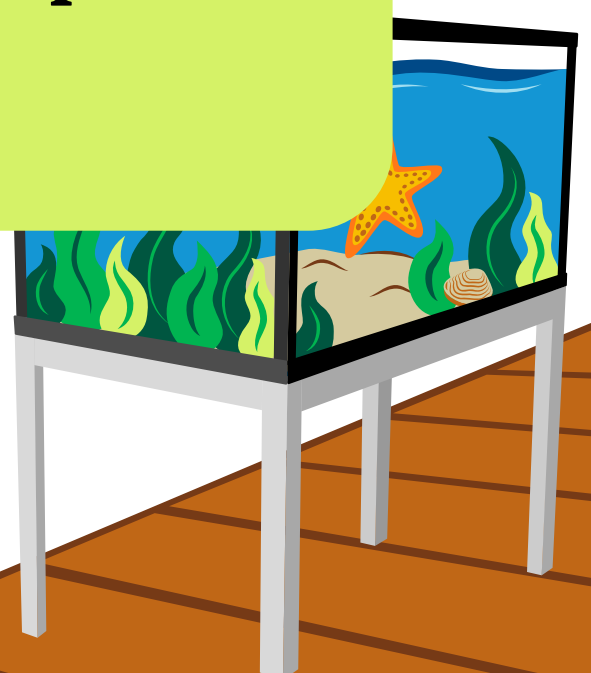
Learn the basics of sailing! During the week you will learn the different parts of a sailboat, how to rig the boats, and practice sailing with new friends. This program is designed for campers who have never sailed before.

Intermediate Backpacking (13-Day)

Put your backpacking skills to practice—first on an adventure at Camp Robbinswold and then on a multiday backpacking adventure at Olympic National Park in the Hoh Rainforest. You’ll make it back to camp for the final campfire to share your adventure. Campers will stay at camp for Sessions 3 and 4.

Counselor-in-Training (CIT) I (13-Day)

In this first level of the leadership program, CITs learn about the skills needed to become a camp counselor. They develop their personal leadership style, explore the basics of planning and leading programs, and discover group management techniques. Campers stay at camp for Sessions 2 and 3.



*Grade as of Fall 2025



Session 4

7/20–7/25 - *Full Week*



Grade*	Program Name	Pricing
9–10	Intermediate Sailing (13-Day)	\$1,980
9–10	Advanced Marine Biology	\$1,150
9–10	Intermediate Backpacking (13-Day)	\$1,980

Intermediate Sailing (13-Day)

Have you been sailing before? It’s time to return to the water as you perfect your sailing skills and become more confident with the boat. At the end of your stay, you’ll participate in a regatta to demonstrate how much you’ve learned. Campers will stay at camp for Sessions 4 and 5.

Advanced Marine Biology

Dive deeper into the natural wonders of Hood Canal, with exploration at Camp Robbinswold and local museums. You’ll also participate in a bioluminescence kayak tour and learn about the plankton that create this phenomenon. Participants will work toward their Eco Explorer or Water badge.

Intermediate Backpacking (13-Day)

Put your backpacking skills to practice—first on an adventure at Camp Robbinswold and then on a multiday backpacking adventure at Olympic National Park in the Hoh Rainforest. You’ll make it back to camp for the final campfire to share your adventure. Campers will stay at camp for Sessions 3 and 4.



*Grade as of Fall 2025



Session 5

7/27–8/1 - *Full Week*



Grade*	Program Name	Pricing
9–10	Sea-to-Summit (13-Day)	\$1,980
9–10	Intermediate Sailing (13-Day)	\$1,980

Sea-to-Summit (13-Day)

Explore Hood Canal on a sea kayak trip, then prepare for a backpacking trip in the wilderness of Camp Robbinswold. Campers should be able to paddle and trek up to 4–7 miles in a day, and will spend at least two days and one night kayaking and backpacking. Campers will stay at camp for Sessions 5 and 6.

Intermediate Sailing (13-Day)

Have you been sailing before? It's time to return to the water as you perfect your sailing skills and become more confident with the boat. At the end of your stay, you'll participate in a regatta to demonstrate how much you've learned. Campers will stay at camp for Sessions 4 and 5.



*Grade as of Fall 2025



Session 6

8/3–8/8 - *Full Week*



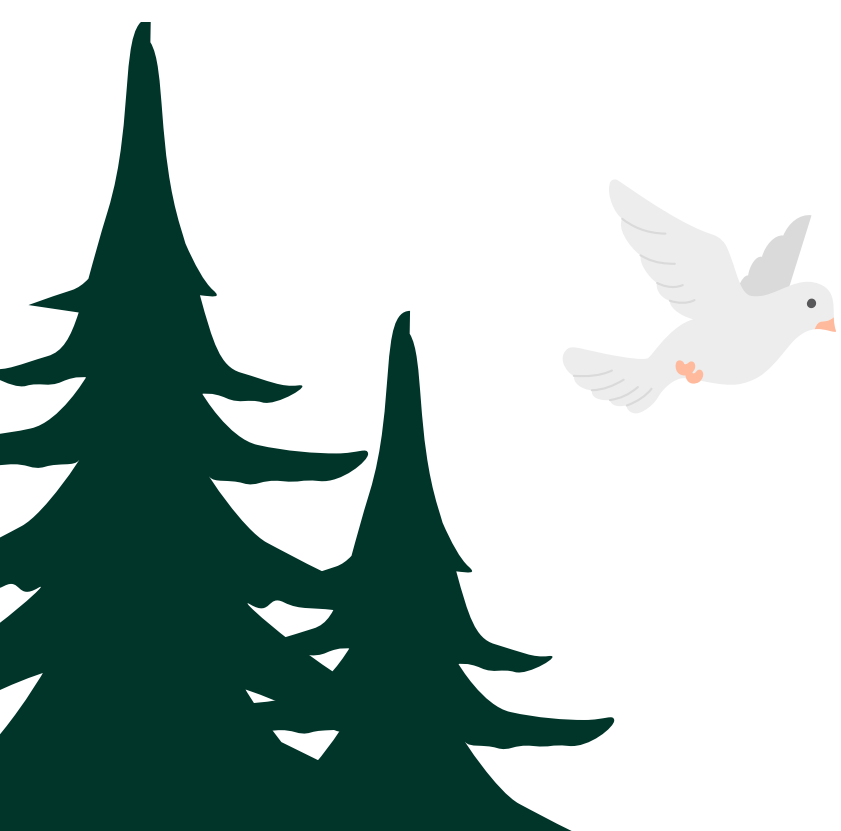
Grade*	Program Name	Pricing
9–10	Beach Bum	\$950
9–10	Sea-to-Summit (13-Day)	\$1,980

Beach Bum

Relax at the waterfront, paddleboard, kayak, and swim—campers will participate in all things water-related! This program also includes a trip to Port Townsend.

Sea-to-Summit (13-Day)

Explore Hood Canal on a sea kayak trip, then prepare for a backpacking trip in the wilderness of Camp Robbinswold. Campers should be able to paddle and trek up to 4–7 miles in a day, and will spend at least two days and one night kayaking and backpacking. Campers will stay at camp for Sessions 5 and 6.



*Grade as of Fall 2025



Session 7

8/10–8/15 - *Full Week*



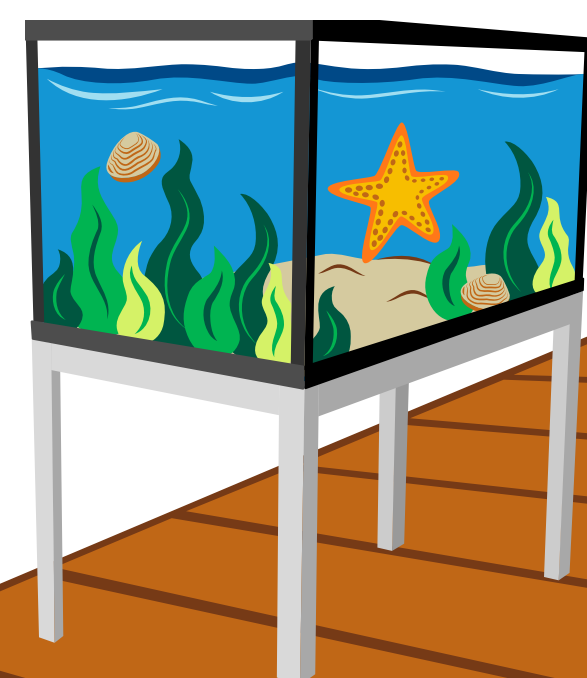
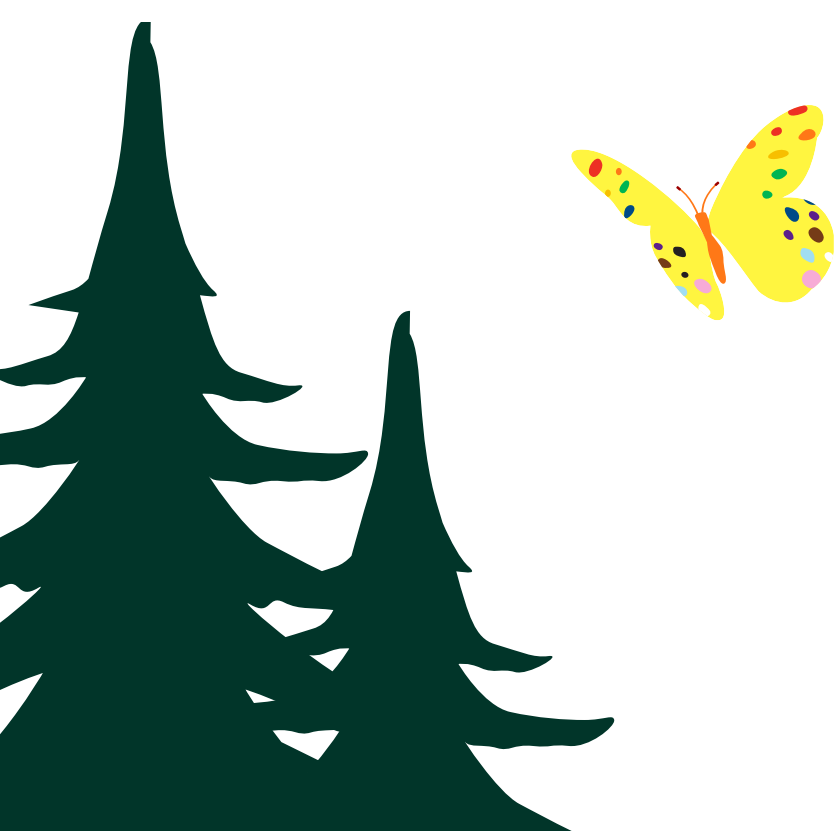
Grade*	Program Name	Pricing
9–10	PRIDE – Into the Arts	\$950
9–10	PRIDE – Classic Camp	\$950

PRIDE – Into the Arts

Delve into the arts, exploring your creative side and creating unique projects to bring home. This session is specifically designed for Girl Scouts who are part of the LGBTQIA+ community.

PRIDE – Classic Camp

Experience Girl Scout camp magic with your community! This session is specifically designed for Girl Scouts who are part of the LGBTQIA+ community.



*Grade as of Fall 2025

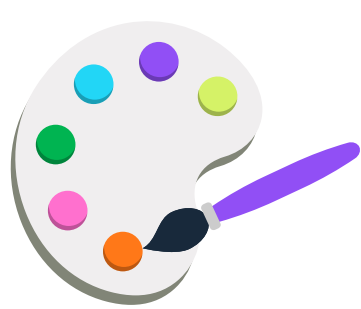


Camp Lyle McLeod



Come play outdoors in 160 acres of pine, hemlock, and fir forest around Lake Bennettsen. You might even catch a glimpse of Tajar during your camp visit! Lodging options include heated cabins, yurts, and open-air cabins.

Camp Activities



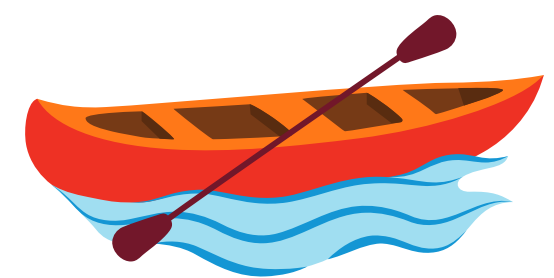
Art



Archery



Campfire



Canoeing



Hiking



Kayaking



Paddleboarding



Swimming



Choose Your Community Camp



Every year, our incredible Girl Scout volunteers host fun, low-cost camp options for local Girl Scouts—including six overnight community camps at Camp Lyle McLeod. Each volunteer-led camp is unique and run by dedicated, specially trained volunteers. Plus, Girl Scouts in grades seven+ can hone their leadership skills as a program aide! Learn more about each overnight community camp and register via each camp’s link on our Overnight Camps landing page.

S	M	T	W	T	F	S
June 22	23	24	25	26	27	28
Madrona Community Camp						
29	30	July 1	2	3	4	5
6	7	8	9	10	11	12
Cedar and Sound Community Camp						
13	14	15	16	17	18	19
Trail and Sail Community Camp						
20	21	22	23	24	25	26
Kayak Community Camp						
27	28	29	30	31	Aug 1	2
Wildside Community Camp						
3	4	5	6	7	8	9
Mountain Valley Community Camp						



Overnight Camp Resources

Contact Us

Visit our website for more information on the world of Girl Scouting:

www.GirlScoutsWW.org

Customer Care

1(800) 541-9852

customercare@girlscoutsww.org



Camp Info and Registration Help

Have questions about camp programming, registering, pricing, financial assistance, or paying for camp with Program Credits (formerly called Cookie Dough)? Reach out to our camp registration team for assistance by calling 1(800) 541-9852 or by emailing registration@girlscoutsww.org



Social Media

Connect with our camps and get a preview of the summer to come! Don't forget to like and follow for regular updates from the camps you love!

@GirlScoutsWW

@Girl Scouts of Western Washington

Girl Scouts of Western
Washington Camp Accounts