



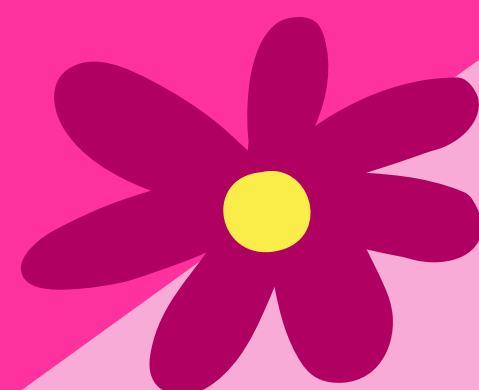
Daisies

Grades K-1*

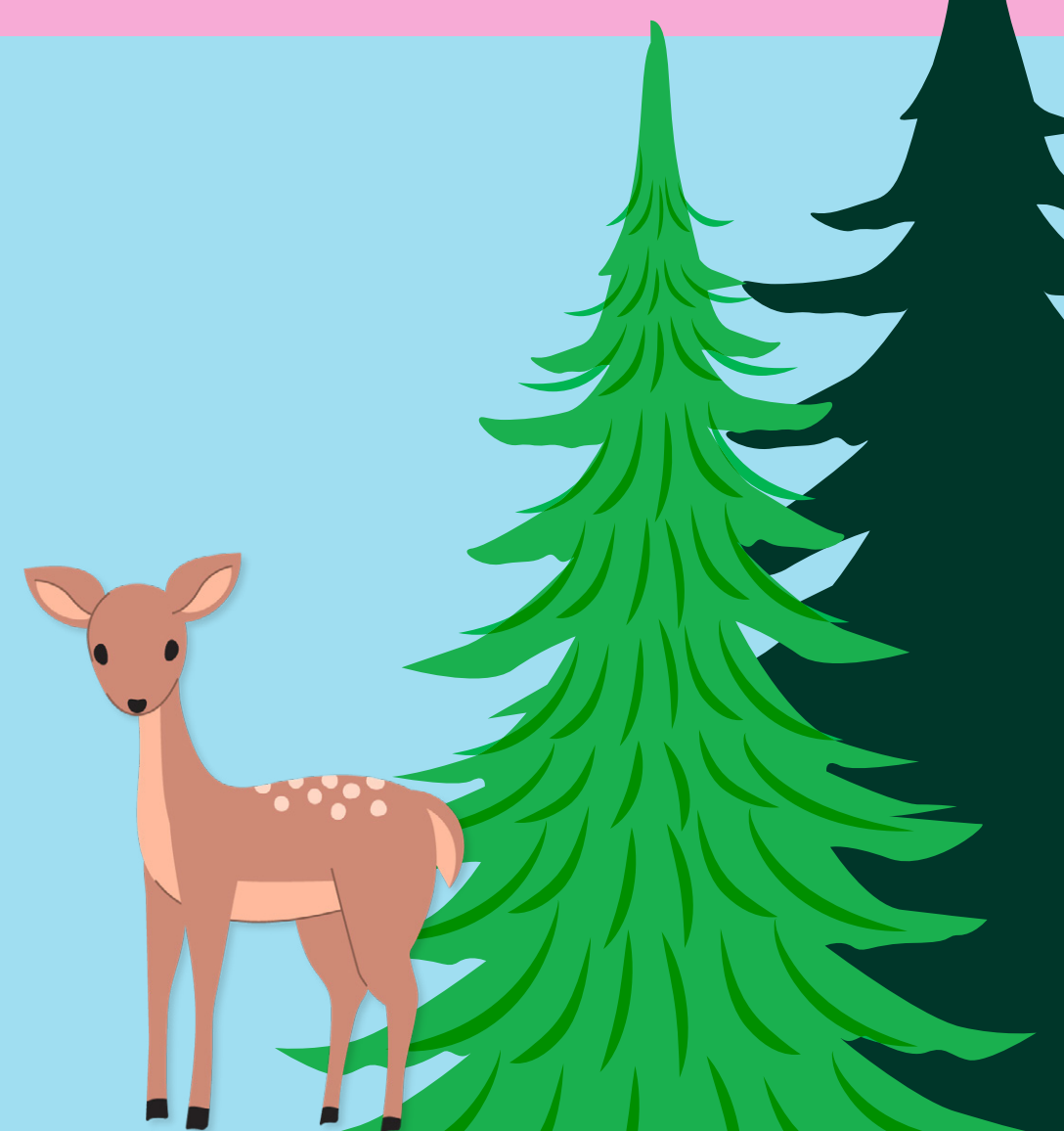
girl scouts
of western washington

Overnight Summer Camp Guide

2025



*Grade as of Fall 2025



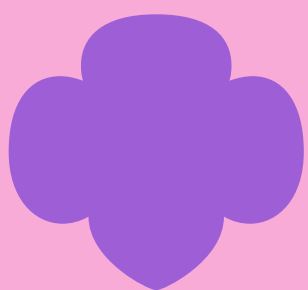


Table of Contents

In This Guide

More About Girl Scout Camp:




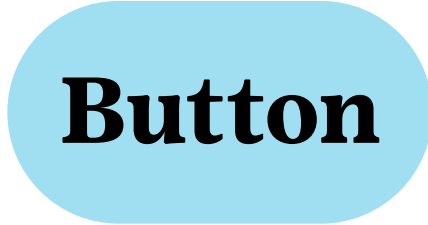



How to Use This Guide

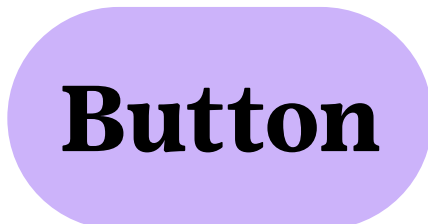
This is an interactive pdf. Click, tap, and/or swipe to explore. You can view this PDF on your phone, tablet, laptop, or desktop.


Ways to Interact

- 

Go to next page
- 

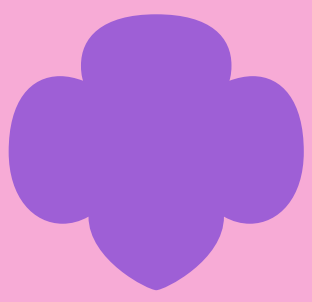
Navigate within camp guide
- 

Go to previous page
- 

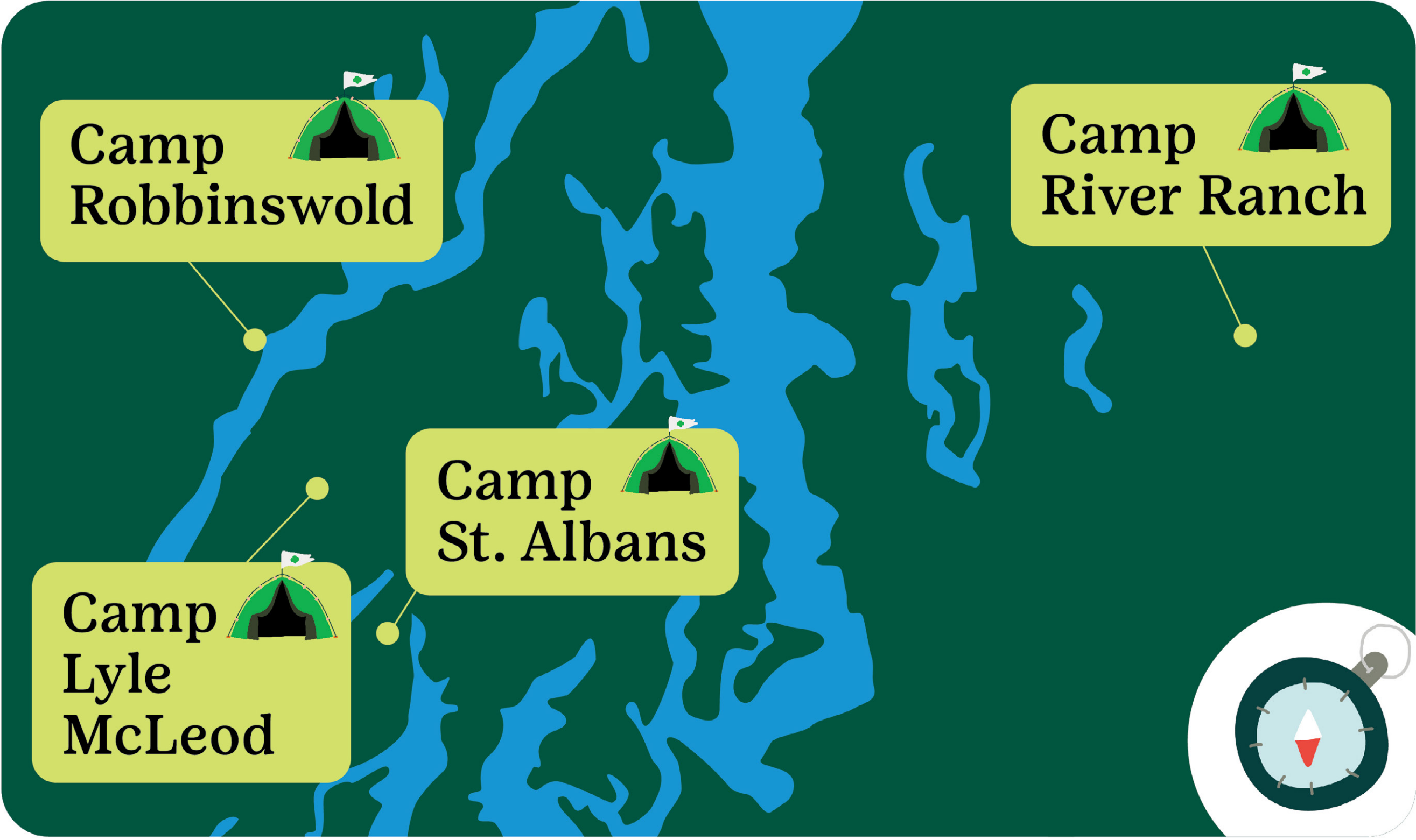
Navigate outside of camp guide
- 

Return to table of contents





Choose Your Summer Camp



Camp River Ranch

South Entrance
33318 NE 24th St.
Carnation, WA 98014

Open House: Sunday, May 18 | 2:00–5:00 PM



Camp St. Albans

251 E Lake Devereaux Rd.
Allyn, WA 98524

Open House: Sunday, May 4 | 2:00–5:00 PM



Camp Robbinswold

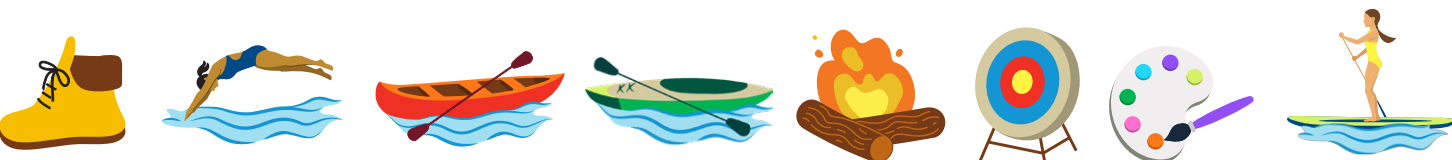
39580 N Highway 101
Lilliwaup, WA 98555

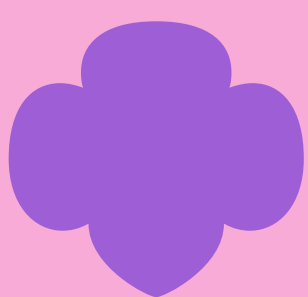
Open House: Sunday, April 27 | 2:00–5:00 PM



Camp Lyle McLeod

800 NE Twin Lakes rd.
Tahuya, WA 98528





Camp Activities

All of our camp programs offer campers the chance to participate in these classic camp activities. Additionally, some of our programs are tailored to a specific type of activity or focus, which will be called out in the program description.



Archery



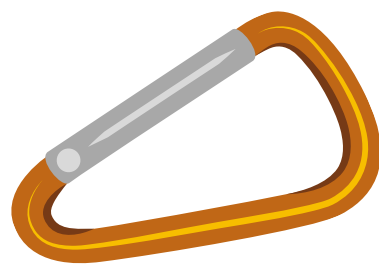
Art



Campfire



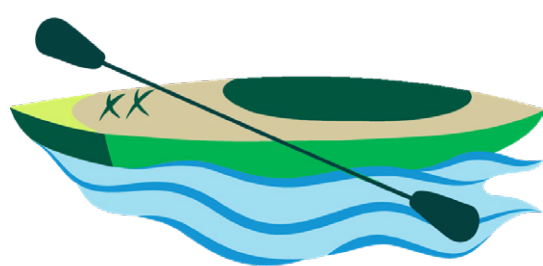
Canoeing



Climbing



Hiking



Kayaking



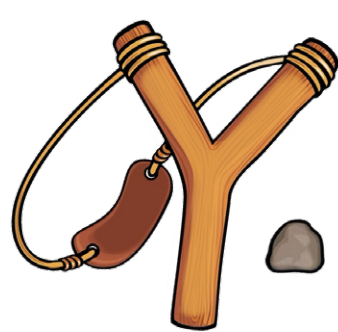
Paddleboarding



Ropes Course



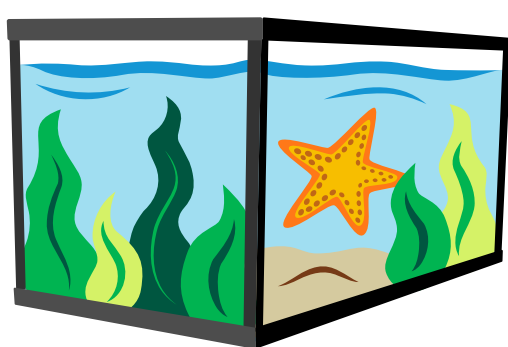
Sailing



Slingshots



Swimming



Touch Tank



Viking Boats



Cost to Attend Camp

Camp S'More at Camp River Ranch



Prices vary based on the unit selected, length of your stay, number of activities you choose, and size of your group. Our reservation team can work with you to “rightsize” your campout for most budgets.

Overnight Camp at Camp St. Albans and Camp Robbinswold



The true cost of attending one week of overnight camp is \$2,100. Because we are committed to keeping camp accessible, Girl Scouts of Western Washington subsidizes 55% of the cost to run all our staff-led overnight camp programs and charges Girl Scout members a significantly discounted rate to register. In this guide, and in CampMinder when you register, you'll see the subsidized member prices listed. When you register in CampMinder, you will also see an option to pay the full price if you are able and willing to cover the true cost of your camper's program.

Overnight Community Camp at Camp Lyle McLeod



Prices vary by camp. Please visit each camp's webpage for more information.



Camp River Ranch

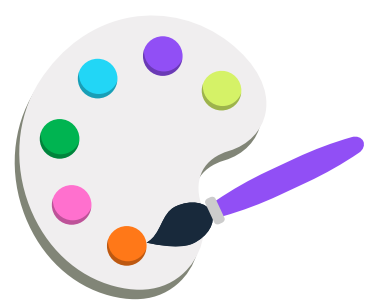


Located in the foothills of the Cascade Mountains, Camp River Ranch spreads across 486 diverse acres with miles of trails to explore. Lodging at Camp River Ranch includes rustic cabins and covered wagons with nearby flush toilets and showers. We also have limited indoor units with full kitchens and indoor bathrooms.

Camp Activities



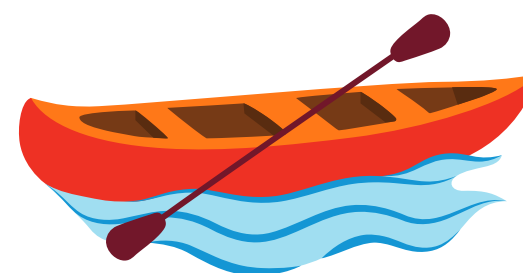
Archery



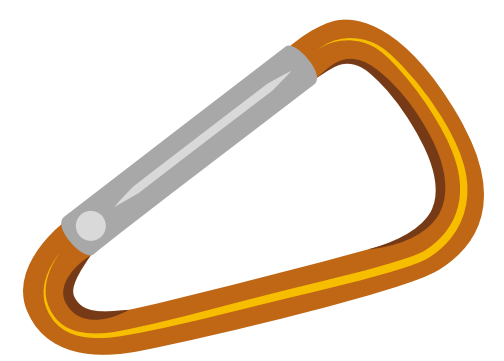
Art



Campfire



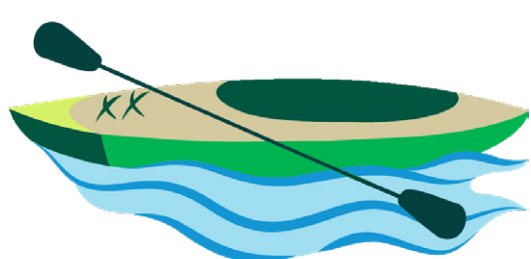
Canoeing



Climbing



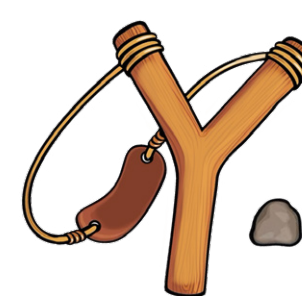
Hiking



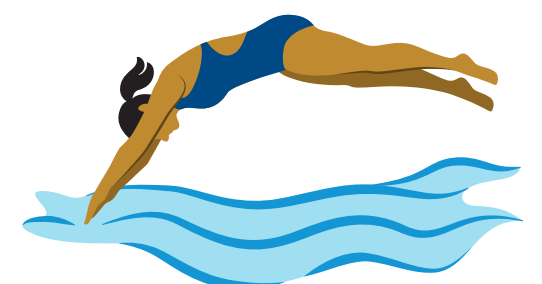
Kayaking



Ropes Course



Slingshots



Swimming



Create Your Own Camp Adventure at Camp S'More

7/4–9/1

Grade*	Program Name	Pricing
K–12, Adults	Camp S'More	Varies

Camp S'More

Camp S'More is a unique way to experience summer camp magic! Campers will be able to build their own camp adventure and experience that fits them, with options to add classic camp activities like canoeing, archery, swimming, and more to their property reservation. Groups must provide food and adult supervision, along with following all Girl Scout safety rules, and the rest is up to campers to decide. The length of your stay and number of activities will vary by group depending on what campers select. Day trips to camp with program reservations are also an option. With activities as low as \$10 per person and cabins starting at \$30 per night, we hope you'll come join us for S'More camp fun!

Please note: Campers can register for Camp S'More by making a property reservation with program add-ons through our Rent Our Camps landing page.



*Grade as of Fall 2025



Camp St. Albans



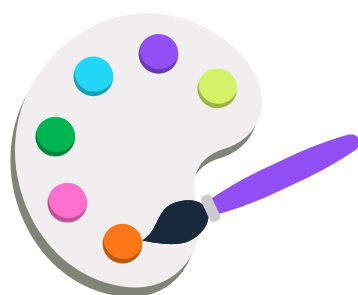
Camp St. Albans covers more than 400 wooded acres with over five miles of trails, all surrounding beautiful Lake Devereaux. The property is known for its unique Viking boats and the gnomes that inhabit the camp. Lodging options include heated cabins, open-air cabins, and platform tents.

Overnight camp programming at Camp St. Albans is offered to Girl Scouts in grades 2–12. If your Girl Scout is starting second grade in Fall 2025, please browse our Brownie Overnight Summer Camp Guide for program offerings.

Camp Activities



Archery



Art



Campfire



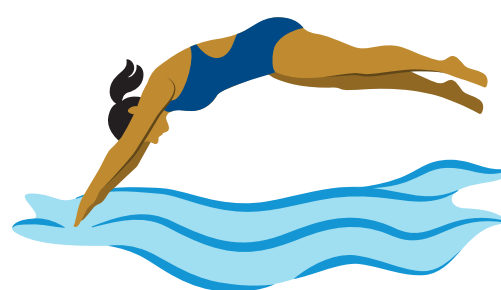
Canoeing



Hiking



Paddleboarding



Swimming



Viking Boats



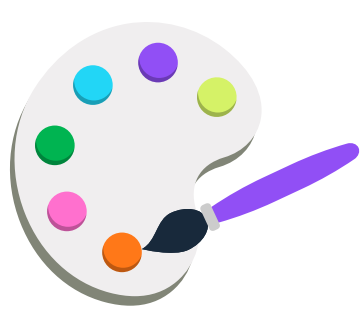
Camp Robbinswold



Located on Hood Canal, Camp Robbinswold covers 570 acres, including one mile of saltwater beachfront, six miles of hiking trails, and a freshwater lake. Campers stay in open-air cabins or canvas tents with up to five other campers. Plus, campers in grades four and above can go on an overnight camping trip on our upper property or along Hood Canal.

Overnight camp programming at Camp Robbinswold is offered to Girl Scouts in grades 2–12. If your Girl Scout is starting second grade in Fall 2025, please browse our Brownie Overnight Summer Camp Guide for program offerings.

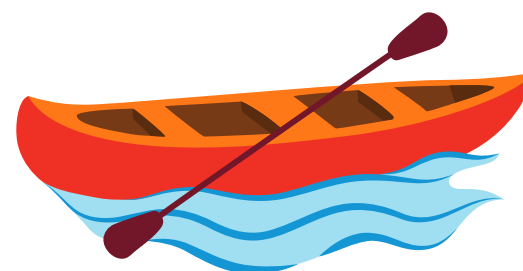
Camp Activities



Art



Campfire



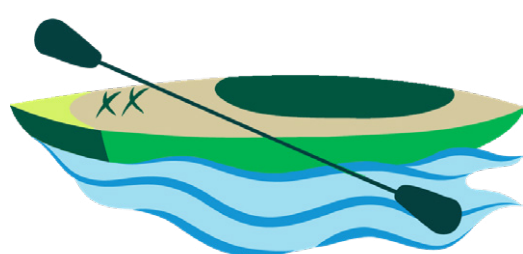
Canoeing



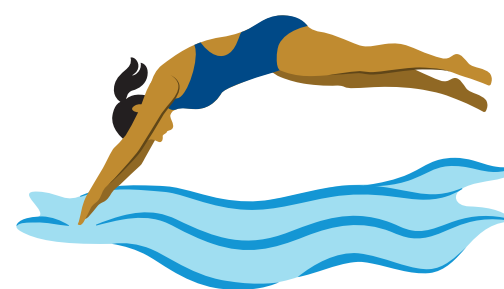
Hiking



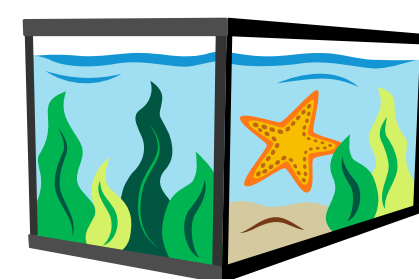
Sailing



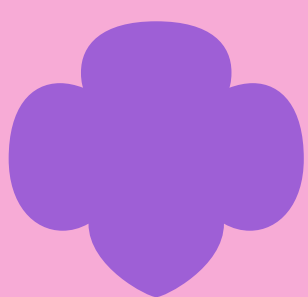
Sea Kayaking



Swimming



Touch Tank

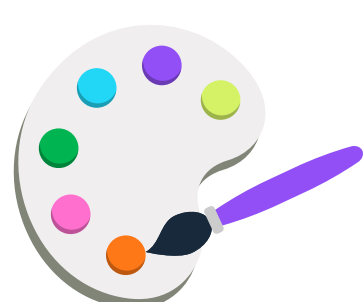


Camp Lyle McLeod



Come play outdoors in 160 acres of pine, hemlock, and fir forest around private Lake Bennettsen. You might even catch a glimpse of Tajar during your camp visit! Lodging options include heated cabins, yurts, and open-air cabins.

Camp Activities



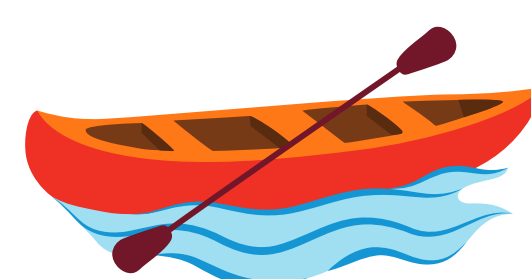
Art



Archery



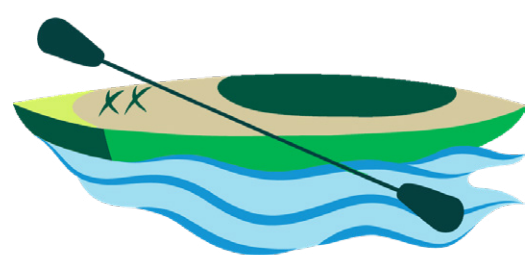
Campfire



Canoeing



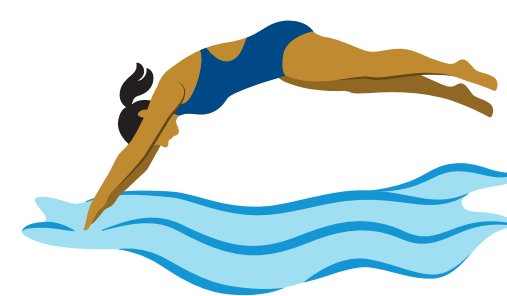
Hiking



Kayaking



Paddleboarding



Swimming





Choose Your Volunteer-Led Camp



Every year, our incredible Girl Scout volunteers host fun, low-cost camp options for local Girl Scouts—including day and twilight camps throughout Western Washington and six overnight community camps at Camp Lyle McLeod. Each volunteer-led camp is unique and run by dedicated, specially trained volunteers. Learn more about each volunteer-led camp and register via each camp’s link on our website.





Overnight Camp Resources

Contact Us

Visit our website for more information on the world of Girl Scouting:

www.GirlScoutsWW.org

Customer Care

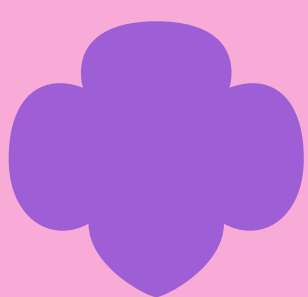
1(800) 541-9852

customercare@girlscoutsww.org



Camp Info and Registration Help

Have questions about camp programming, registering, pricing, financial assistance, or paying for camp with Program Credits (formerly called Cookie Dough)? Reach out to our camp registration team for assistance by calling 1(800) 541-9852 or by emailing registration@girlscoutsww.org



Social Media

Connect with our camps and get a preview of the summer to come! Don't forget to like and follow for regular updates from the camps you love!

@GirlScoutsWW

@Girl Scouts of Western Washington

Girl Scouts of Western
Washington Camp Accounts