



## Lodge

Capacity of 140, dining & Meeting area with fireplace. Radiant heat & Electric lights. Complete institutional kitchen with gas range, freezer, walk-in cooler, cooking utensils and equipment. Dining and serving equipment available. Bathrooms are located in the basement area, with two large activity/meeting rooms with heat. Wheelchair accessible.



The above exterior photos of the Lodge. The Lodge is down the hill from the parking lot.



The dining area has a wonderful view of the Hood Canal and has a library near the dining area entrance. The kitchen is accessed by either door along side the fireplace. There are exits to deck and to all other sides of the lodge. The Lodges bathrooms are exterior and should not be used as restrooms for other units.



The basement area may be accessed either by the exterior lower door to the lodge or by the stairs in the kitchen. These rooms may be used for arts and crafts or program.





### Rotunda

A circular open-sided building with fireplace and nearby stream. Ideal for campfires, rainy day activities and folk dancing. Electric lights and outlet.



Close to the Lodge and Staff House. There is a latrine just north of the Rotunda.

# Camp Robbinswold

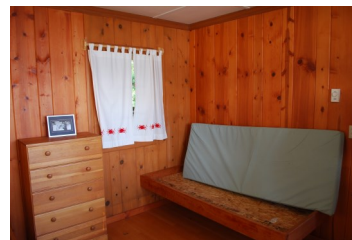
## Indoor Units

### Staff House

This building has a capacity of 6, has a dining and meeting area and comes with heat and electric lights. Kitchen-with cook top and refrigerator, sink, hot and cold water. Cooking equipment is provided. There is a bathroom in the building. Bunks with mattresses.



Exterior photo taken the Boathouse area.



This building is just north of the Lodge and has two bedrooms and indoor plumbing. You can hear the creeks flow and has a lovely view of the Hood Canal. The Rotunda is nearby.



Kitchen area has a small refrigerator, microwave, and cook top. Glasses, plates, bowls, pots and skillet, tea kettle.

# Camp Robbinswold

## Indoor Units

### Upper Health House

This unit has a capacity of 12. There is a dining and meeting area with heat and electric lights, kitchen with range and refrigerator. Three small rooms, each sleeps two with adjoining bathrooms, and one large room that sleeps six with adjoining complete bathroom/shower. Bunks with mattresses. Wheelchair accessible.



Exterior photo to show the wheelchair ramp and the exterior doors leading off the individual bedrooms. This unit can be used to house men. Unit is south of the lodge and may be reached by the main camp road and walk up to it or by the camp service road.



Bunk style beds with mattresses in the individual rooms and the different styles of bathrooms in the Upper Health House.



Main room for the Upper Health House. The seating converts to bunks.

# Camp Robbinswold

## Indoor Units

### Lower Health House

Capacity of 12, dining and meeting area with heat and electric lights, kitchen with range and refrigerator. Unit cooking equipment provided. One large room that sleeps 12, with adjoining complete bathroom. Bunks with mattresses.



This unit is located south of the lodge. It may be accessed either by the main camp road and walking up to it or there is a small service road that leads to the Health House and Glade. Lower Health House has bunk beds and couches for seating. With tables and chairs.



### Boat House Loft

Capacity of 8, a winterized building for sleeping only with a small meeting area. Flush toilets available nearby. No cooking available in this unit. The Boat House Loft is accessed by the stairs at the back of the Boat House. The restroom is at the bottom of the stairs.

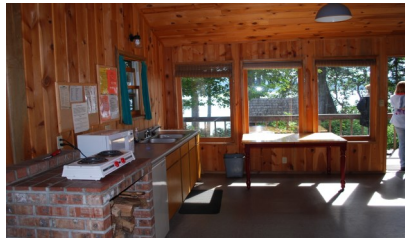


# Camp Robbinswold

## Indoor Units

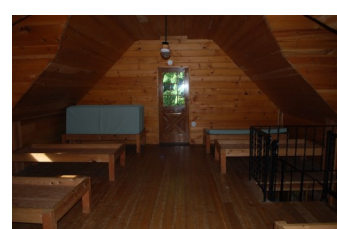
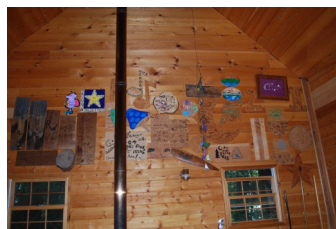
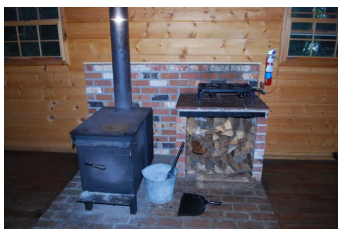
### Glade

This unit has a capacity of 8 and is a winterized building with a wood stove for cooking and heating. There are electric lights, two burner electric hotplate, hot and cold running water with counter and sink. Two bedrooms sleep three each. The main room has two couches which convert to bunks. The bathroom is in a nearby building. This unit is wheelchair accessible. The Glade unit is south of the Lodge and has a wheelchair ramp. Has a partial view of the Hood Canal. This unit may be accessed by the main camp road and walk up the hill to the Unit or use the camp service road.



### Little Creek

This unit has a capacity of 12, and is one winterized building with sleeping loft. Woodstove for heat and cooking. Bunks with mattresses. Outside water and biffy. Propane lanterns and a 2 burner gas hot plate. No electricity. Fire Circle. Unit equipment. Dining and serving utensils. Exterior photos of Little Creek showing the wrap around deck and the biffy with hand sanitizing dispenser. This unit is up hill from the main camp road.



# Camp Robbinswold

## Outdoor Units

### Barnacle Bay

Capacity of 22, four cabins, three sleep six, one sleeps four. Bunks with mattresses. Biffy, water and fire circle. Cook shelter with unit equipment. This is the southern most unit from the lodge and set next to the water. A nice area to beach comb. Access is via the main camp road. The program shelter has a fire place, gear locker , water and tables with benches. Fire circle is near by.



### Cedar Ledge

Capacity of 24, four cabins, each sleeps six. Bunks with mattresses provided. Water, biffy and fire circle in Cedar Ledge Camp. Cedar ledge is just slightly uphill from the main camp road. The program shelter has a fire place, tables with benches and outdoor unit equipment, with 2 burner propane stove. The unit's fire circle is close to the program shelter.



# Camp Robbinswold

## Outdoor Units

### Enchanted Forest

This unit has some paths that have stairs. This site is along the hill. This unit is the northern most site. These cabins are open air cabins and located close to the Amphitheater. The camp capacity is set at 24 people. This camp has four cabins and each sleep six people. Sleeping quarters have mattress pads on each bunk. This unit has running water, biffys and a fire circle.



### Forest

This camp has four open air cabins that sleep 6 people each. The capacity for this unit is 24. Cabins are located in the middle of the hillside. When coming from the road you will need to take stairs. There is also access to this unit from the trail that connects the units. This unit is located to the south of the lodge. The program shelter has tables with benches, gear locker with cooking equipment and 3 burner propane stove. The fire circle is in unit and latrines are close by with hand sanitizing stations. This unit has a water faucet in camp for fresh water.





# Camp Robbinswold

## Outdoor Units

### Grove

This unit has the capacity of sleeping 24. It has four cabins which sleep six in each cabin. Each bunk has a mattress. This unit is an open air unit. The cook shelter for this unit is located at the crest of the hill and close to the Cedar Ledge unit. The cook shelter has equipment for the Water, biffy and fire circle. Cook shelter with unit equipment. There is a fire place, tables with benches and the unit equipment. The fire circle is close by.



### Rotunda

A circular open sided building with fireplace and nearby stream. Ideal for campfires, rainy day activities and folk dancing. Electric lights and outlet.



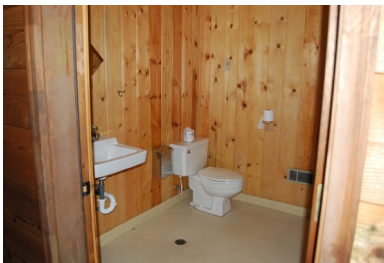
Close to the Lodge and Staff House. There is a latrine just north of the Rotunda.

## Boat House

The Boathouse stores all the kayaks, canoes, windsurfing and sailing equipment. The dock located at the front of the boat house.

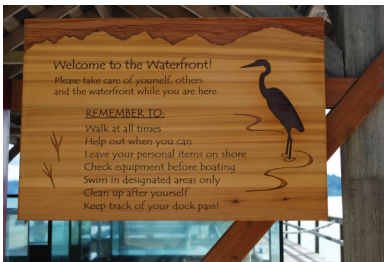


There is not boating except during summer camp due to restrictions on who can supervise water safety for water that is subject to tidal currents.



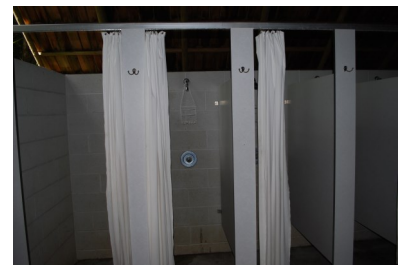
The restrooms at the Boat House are flush toilets with hot and cold water and showers.

Photo of the boat dock and the touch tanks used during resident camp below.



## Shower Houses

There are two unheated community shower houses. Available in the summer only. One is located between Cedar Ledge and Grove, and the other is at the other end of camp by Forest.



The above is the shower house in the Cedar Ledge/Grove area at the North end of camp. The Shower house also has a laundry area for camp staff. The below is inside the Shower house in the Forest area at the southern end of Camp



## Points of Interest



**Enchanted Forest Amphitheatre:** Beautifully situated next to the water and just below Enchanted Forest, the amphitheater has graduated seating and a campfire circle.



**Amphitheater:** This amphitheater is by the Grove Unit and is an all camp Amphitheater with slightly graduated seating. Close to the Rotunda and the Grove program shelter.



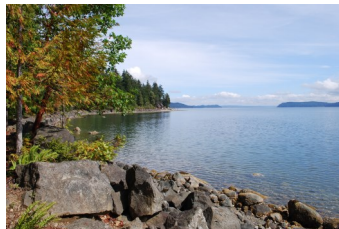
**All camp wood shed** close to Cedar Ledge. There is a second wood shed closer to Little Creek. The all camp wood shed is close to the Log Cabin.

**Log Cabin:** Not for rent. This is the first structure built at Robbinswold and was used by the original owners for vacations.

**Primitive Point Trail:** One-half mile walk to a scenic outlook on Hood Canal. Good spot for a sack lunch. No water or latrine.



**Teepee:** Used for staff and overflow. Not available to rent.



**Hood Canal:** Beautiful views of Hood Canal from most of the Units and from the camp road. Wonderful for beach combing, and to watch the fish.

